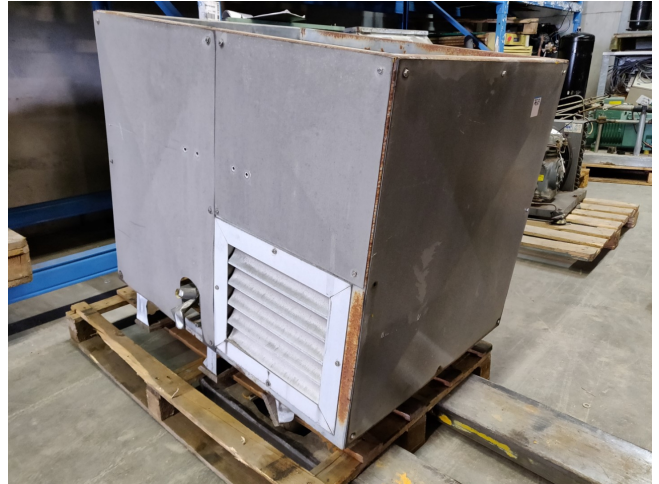


# DWM DLED-201-EWL-000 Condensing unit

## Specifications

Brand	DWM
Type	DLED-201-EWL-000 Condensing unit
Refrigerant	Freon
kW at +10°C/+40°C	10.92
kW at 0°C/+40°C	7.43
kW at -5°C/+40°C	5.99
kW at -10°C/+40°C	4.74
kW at -20°C/+40°C	2.74
kW at -30°C/+40°C	1.33
kW at -40°C/+40°C	0.43
On steel base frame	✓
Pressure safety switches	✓
Hp/Lp/Op	
Pressure gauges	✓
Hp/Lp/Op	
Liquid line filter drier	✓
Power	9.9
Remarks	Our capacity table is based on Manufacturer spec. We would like to know which refrigerant is in your system
Weight in kg.	84
Condensing Unit	✓



Stock

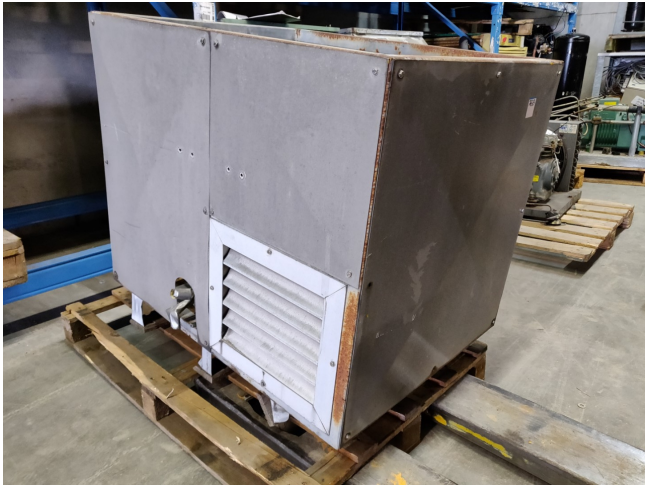
1

---

## Description

### **Used DWM DLED-201-EWL-000 Condensing unit**

Used condensing unit DWM - Copeland DLED-201-EWL-000 Semi-hermetic piston compressor. \*Why choose for HOSBV? We're not only the largest used refrigeration specialist in Europe, but also, we deliver all equipment including an extensive test, warranty and industrial cleaning. \*Optional we can also perform a new paint job and arrange the logistics.







## Cooling capacity [kW]

t <sub>e</sub> \ t <sub>a</sub>	-40	-35	-30	-25	-20	-15	-10	-5	0	5	10
25	0.88	1.38	2.01	2.78	3.70	4.80	6.07	7.53	9.20	11.08	13.19
30	0.72	1.18	1.77	2.50	3.37	4.40	5.61	7.00	8.60	10.40	12.42
35	0.57	1.00	1.55	2.22	3.05	4.02	5.17	6.49	8.01	9.73	11.66
40	0.43	0.83	1.33	1.97	2.74	3.66	4.74	5.99	7.43	9.07	10.92
45	0.30	0.67	1.14	1.72	2.44	3.31	4.33	5.51	6.88	8.43	10.19
50	0.19	0.52	0.95	1.50	2.16	2.97	3.93	5.04	6.34	7.81	9.49
55	-	-	0.78	1.28	1.90	2.65	3.55	4.60	5.81	7.21	-
60	-	-	-	1.09	1.66	2.35	3.19	4.17	5.31	-	-

## Power input [kW]

t <sub>e</sub> \ t <sub>a</sub>	-40	-35	-30	-25	-20	-15	-10	-5	0	5	10
25	0.99	1.13	1.26	1.39	1.50	1.60	1.67	1.71	1.71	1.66	1.57
30	0.97	1.12	1.27	1.42	1.56	1.69	1.79	1.86	1.90	1.90	1.84
35	0.94	1.11	1.28	1.45	1.61	1.76	1.90	2.00	2.08	2.11	2.10
40	0.91	1.09	1.27	1.46	1.65	1.83	1.99	2.13	2.24	2.31	2.34
45	0.88	1.07	1.27	1.47	1.68	1.88	2.07	2.24	2.39	2.50	2.57
50	0.84	1.04	1.25	1.48	1.71	1.93	2.15	2.34	2.52	2.67	2.78
55	-	-	1.24	1.48	1.72	1.97	2.21	2.44	2.64	2.82	-
60	-	-	-	1.47	1.73	2.00	2.26	2.52	2.75	-	-